

Cambridge IGCSE™

CANDIDATE
NAME

CENTRE
NUMBER

--	--	--	--	--

CANDIDATE
NUMBER

--	--	--	--

GEOGRAPHY

0460/21

Paper 2 Geographical Skills

May/June 2024

1 hour 30 minutes

You must answer on the question paper.

You will need:

Insert (enclosed)	Plain paper
1:25000 survey map (enclosed)	Protractor
Calculator	Ruler

INSTRUCTIONS

- Answer **all** questions.
- Use a black or dark blue pen. You may use an HB pencil for any diagrams or graphs.
- Write your name, centre number and candidate number in the boxes at the top of the page.
- Write your answer to each question in the space provided.
- Do **not** use an erasable pen or correction fluid.
- Do **not** write on any bar codes.
- If additional space is needed, you should use the lined pages at the end of this booklet; the question number or numbers must be clearly shown.

INFORMATION

- The total mark for this paper is 60.
- The number of marks for each question or part question is shown in brackets [].
- The insert contains additional resources referred to in the questions.

Definitions

MEDCs – More Economically Developed Countries

LEDCs – Less Economically Developed Countries

This document has **16** pages. Any blank pages are indicated.

1 Study the map extract for Panzendorf, in the Tyrol region of Europe. The scale is 1 : 25 000.

(a) Fig. 1.1 shows some of the features in the south-east of the map extract.

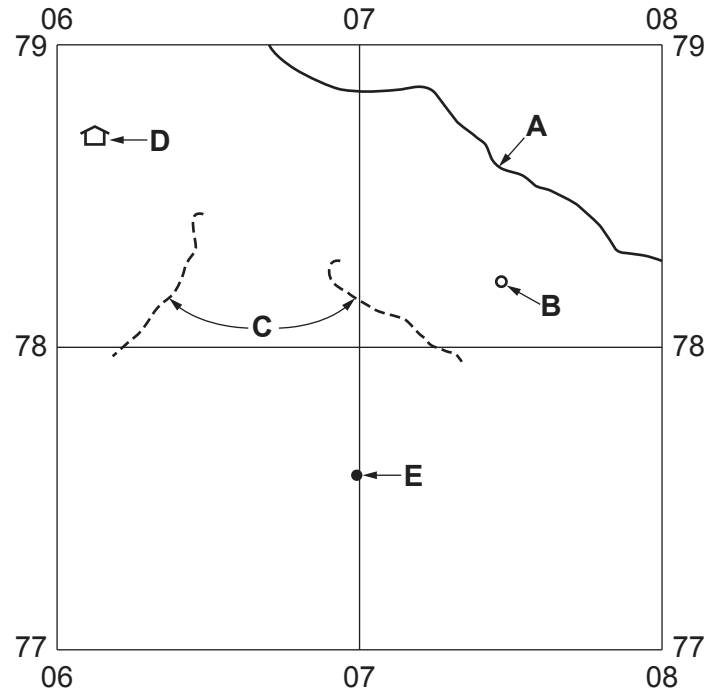


Fig. 1.1

Using the map extract, identify the following features shown on Fig. 1.1:

(i) the name of the river at **A**

..... [1]

(ii) feature **B**

..... [1]

(iii) feature **C**

..... [1]

(iv) feature **D**

..... [1]

(v) the height above sea level of the spot height at **E**.

..... metres [1]

(b) Find the settlements of Tassenbach and Tessenberg in the central part of the map extract.

(i) Compare the height above sea level and slopes of the two settlements.

	Tassenbach	Tessenberg
height above sea level
slopes

[2]

(ii) Compare the transport infrastructure of the two settlements.

.....

 [2]

(c) Find main road 100, which passes through the main settlement at Panzendorf.

(i) Measure the distance along the road from where it meets the western edge of the map to the main road junction in Tassenbach. Give your answer in metres.

..... metres [1]

(ii) What is the compass direction **from** the point where main road 100 meets the western edge of the map **to** the main road junction in Tassenbach?

..... [1]

(iii) Measure the compass bearing **from** the point where main road 100 meets the western edge of the map **to** the main road junction in Tassenbach.

..... degrees [1]

(iv) Give the six-figure grid reference of the main road junction in Tassenbach.

..... [1]

(d) Study the relief and drainage of the area north of northing 81.

Which **five** of the following statements describe the relief and drainage of this area? Tick only **five** boxes.

	tick (✓)
There is a flood plain.	
There are north-facing slopes.	
There is land over 1400 m.	
There is a plateau.	
There are steep slopes.	
There are V-shaped valleys.	
Rivers flow east.	
Rivers flow north.	
Rivers flow south.	
There are small rivers.	

[5]

(e) Fig. 1.2 is a cross-section along northing 78 from 040780 to 070780.

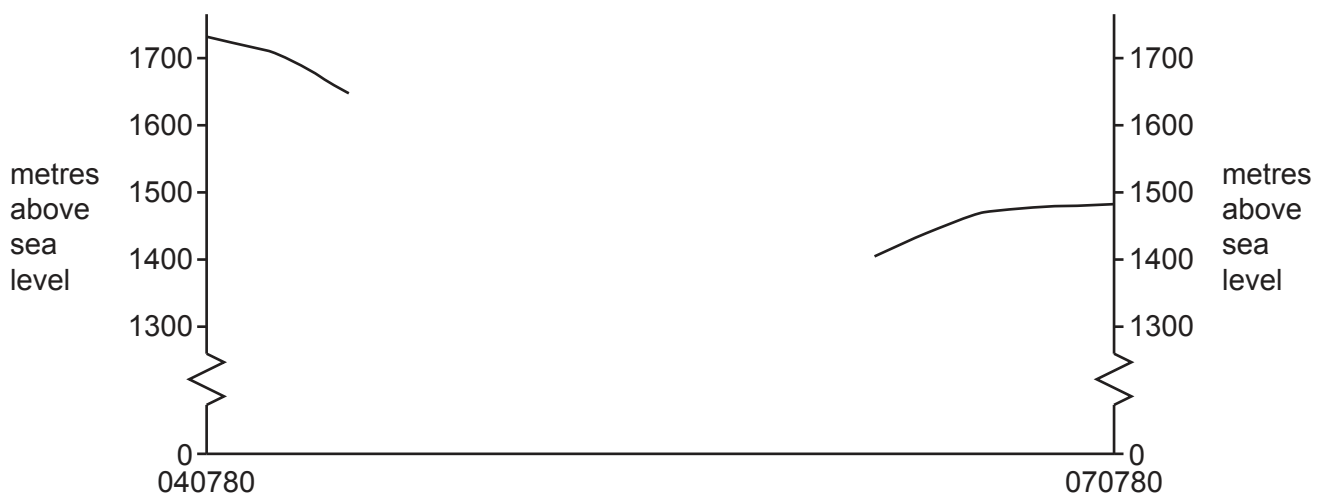


Fig. 1.2

The cross-section shown in Fig. 1.2 is incomplete. Using information from the map extract, draw a line on Fig. 1.2 to **complete the cross-section**. [2]

[Total: 20]

- 2 (a) Fig. 2.1 shows international population migration data to and from the Republic of Ireland for selected years.

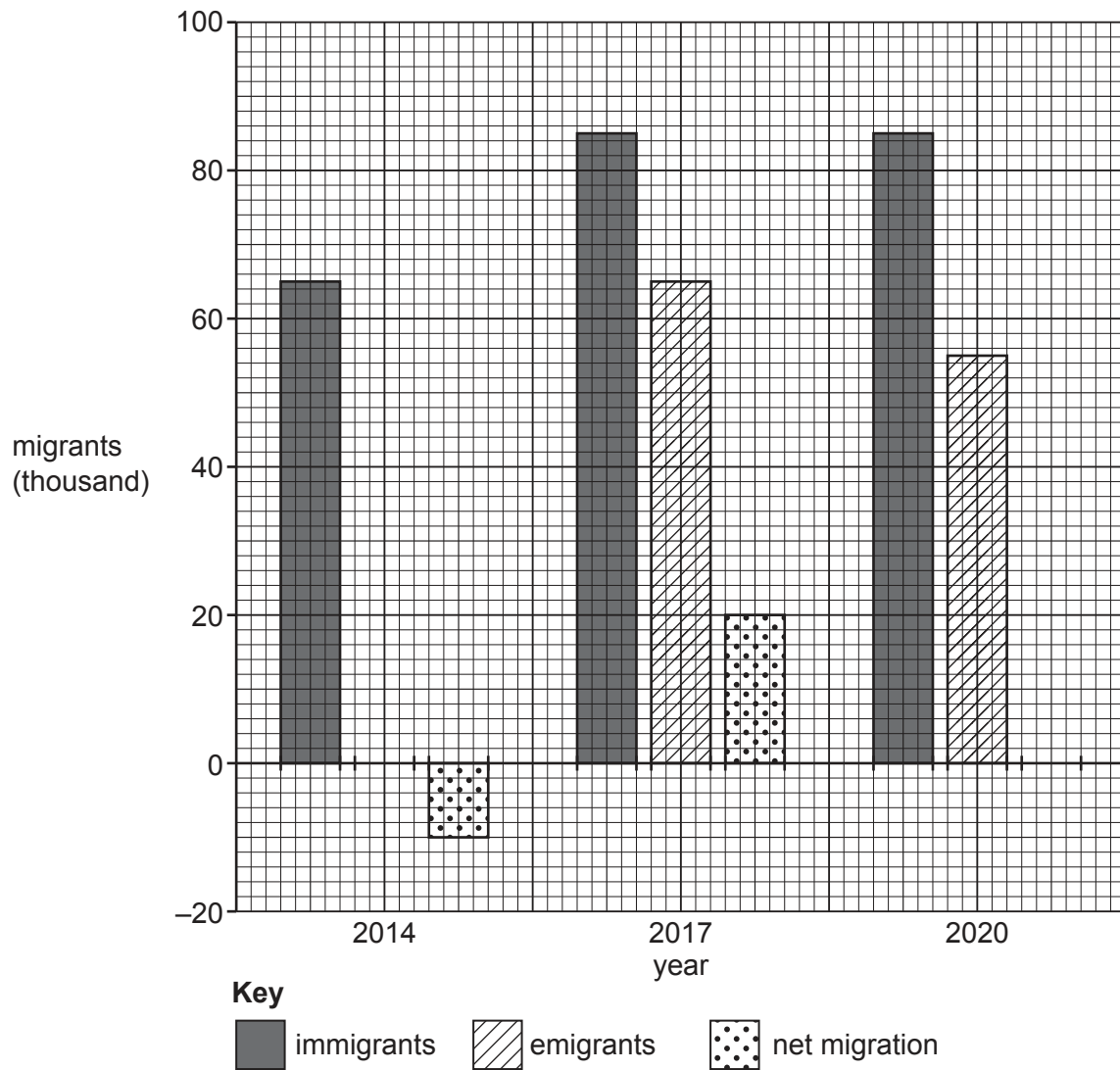


Fig. 2.1

Using Fig. 2.1, **calculate**:

- (i) net migration in 2020

..... thousand

[1]

- (ii) emigration in 2014.

..... thousand

[1]

(b) Table 2.1 shows the nationality of migrants travelling to and from Ireland.

Table 2.1

		year						
		2014	2015	2016	2017	2018	2019	2020
		net migration (thousands)						
nationality of migrants	British (UK)	−2	−0	1	2	3	4	3
	European (excluding Irish)	7	9	12	5	10	12	6
	Irish (Republic of Ireland)	−22	−16	−9	−3	0	−2	0
	rest of the world	9	13	12	16	21	19	19

Describe the **changes** in the patterns of migration shown in Table 2.1. Do **not** use statistics in your answer.

.....

.....

.....

.....

.....

.....

.....

..... [4]

(c) Suggest **one** advantage and **one** disadvantage for a country which receives large numbers of international immigrants.

advantage

.....

disadvantage

.....

[2]

[Total: 8]

- 3 Table 3.1 shows the settlement hierarchy of a district in Antrim, Northern Ireland.

Table 3.1

type of settlement	number of settlements	position in settlement hierarchy
main town (MT)	3	<div style="text-align: center;"> high ↑ ↓ low </div>
small town (ST)	5	
village (V)	10	
small settlement (SS)	17	

- (a) (i) Use information from Table 3.1 to **complete Fig. 3.1** by plotting the number of small towns. [1]

Content removed due to copyright restrictions.

Fig. 3.1

- (ii) Describe the relationship between the number of settlements and their position in the settlement hierarchy.

.....
 [1]

- (b) Table 3.2 shows population size, type of settlement and its position in the settlement hierarchy for selected settlements.

Table 3.2

name of settlement	population size	type of settlement	position in hierarchy
Ballymena	29 500	main town	<div>high</div> <div>↑</div> <div>↓</div> <div>low</div>
Carrickfergus	28 000		
Larne	18 700		
Ahoghill	3 400	small town	
Broughshane	2 900		
Cullybackey	2 500		
Greenisland	5 500		
Whitehead	3 800		
Ballycarry	981	village	
Ballygalley	821		
Ballystrudder	992		
Cargan	588		
Carnlough	1 512		
Clough	220		
Glenarm	568		
Kells and Connor	2 053		
Martinstown	345		
Portglenone	1 174		

- (i) Using Table 3.2, describe the relationship between position in the settlement hierarchy and population size.

.....
 [1]

- (ii) What is unusual about the population size of the village of Kells and Connor?

.....
 [1]

- (c) Fig. 3.2 shows the locations of the settlements in Table 3.2.

Content removed due to copyright restrictions.

Fig. 3.2

- (i) The town of Ballymena has the largest sphere of influence of all the settlements shown. Using evidence from Fig. 3.2 and Table 3.2 **only**, suggest **two** reasons for this.

1

.....

2

.....

[2]

- (ii) Large areas of the district shown in Fig. 3.2 have no settlements. Suggest **two** reasons for this.

1

.....

2

.....

[2]

[Total: 8]

- 4 (a) Fig. 4.1 (Insert) shows a coastal area in New Zealand. Identify features **A–E** shown in Fig. 4.1. Choose your answers from:

arch beach cave headland sand dune spit stack wave-cut platform

A

B

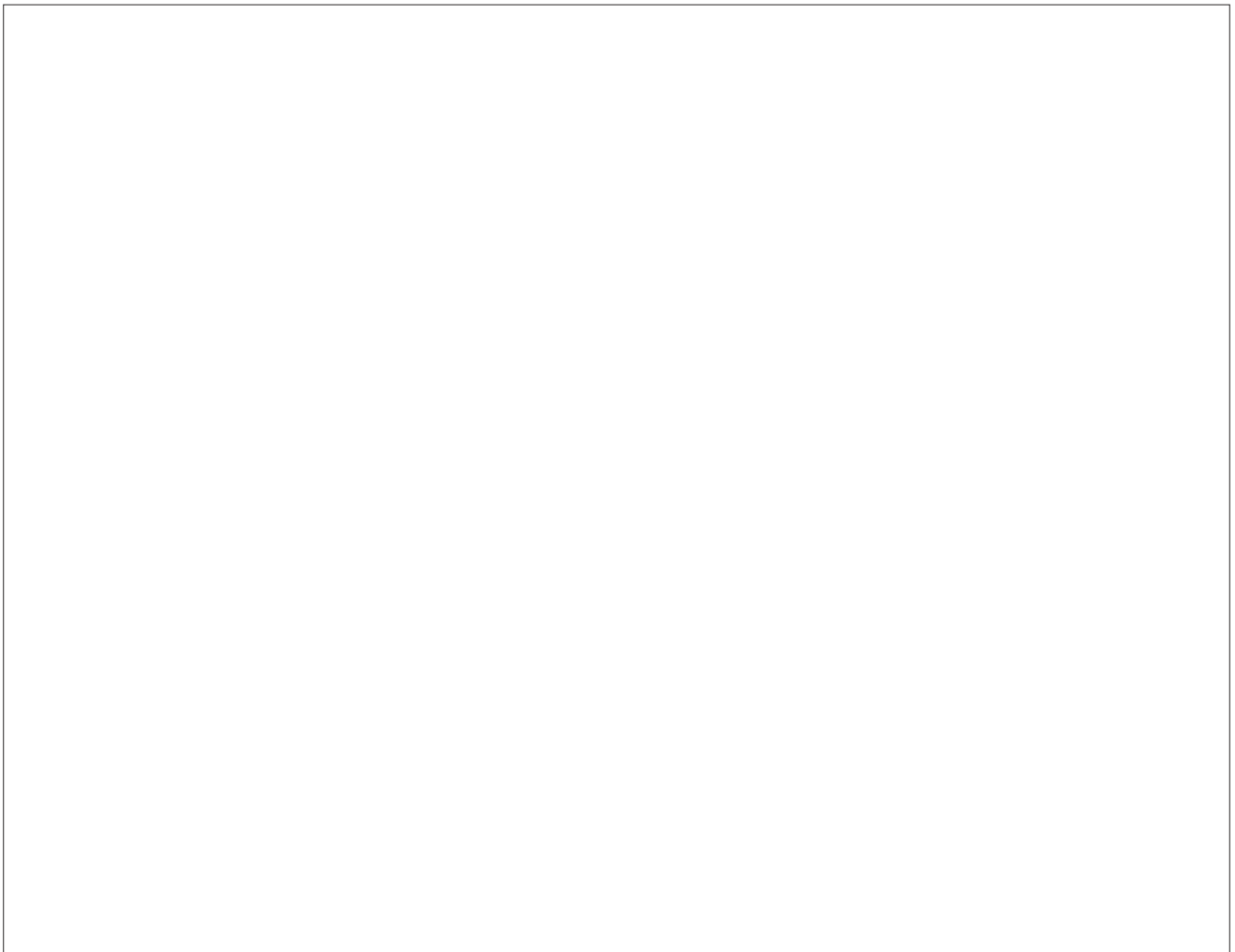
C

D

E

[5]

- (b) Draw a **labelled** diagram to explain the formation of a bay and headland along a coastline.



[3]

[Total: 8]

- 5 Fig. 5.1 is a map of part of South America, showing some of the main active volcanoes in Chile. Fig. 5.2 is a sketch cross-section along the line A–B in Fig. 5.1, through the active volcano Cerro Azul.

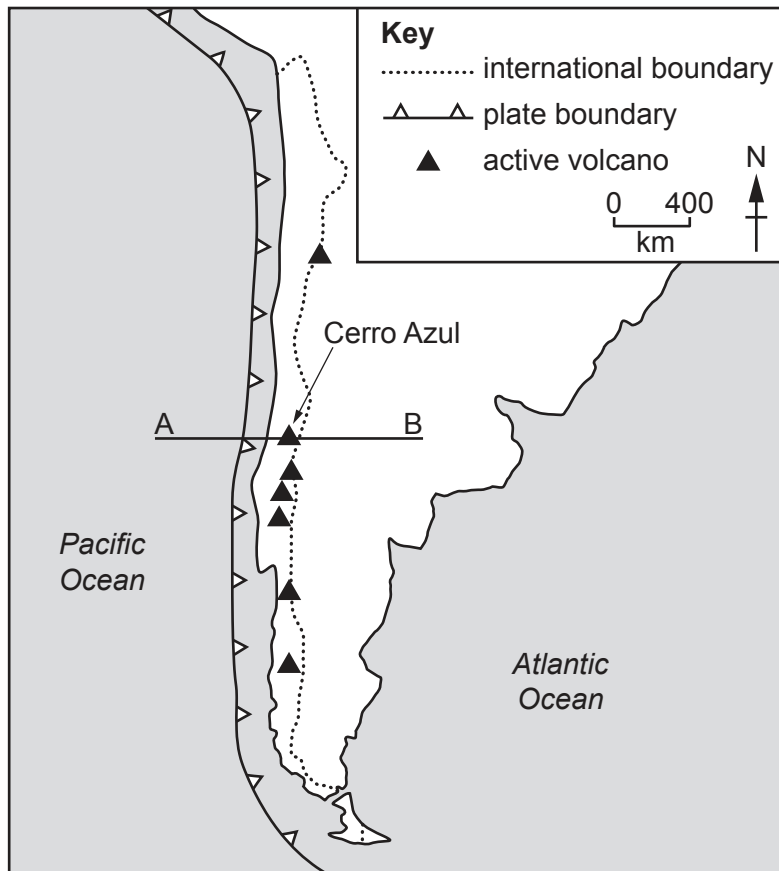


Fig. 5.1

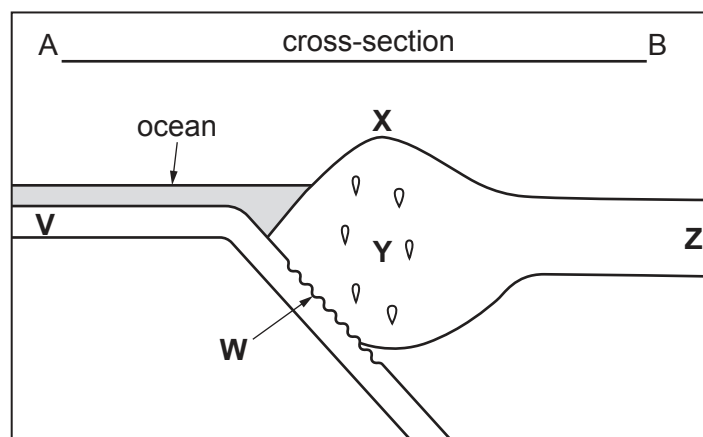


Fig. 5.2

(a) Draw **two** arrows to show the direction of plate movements **on Fig. 5.2**. [1]

(b) Choose **four** letters from **V, W, X, Y** and **Z** to identify the following features shown in Fig. 5.2:

	letter
oceanic plate
rising magma
subduction zone
volcano.

[4]

(c) The volcanoes shown in Fig. 5.1 are strato-volcanoes. Describe the features of a strato-volcano.

.....

.....

.....

.....

.....

..... [3]

[Total: 8]

6 Figs. 6.1 and 6.2 (Insert) show two rural areas in Africa.

(a) Which **two** of the following terms describe the agriculture shown in Fig. 6.1? Tick **two** boxes.

	tick (✓)
arable	
commercial	
mixed	
subsistence	

[2]

(b) Which **two** of the following terms describe the agriculture shown in Fig. 6.2? Tick **two** boxes.

	tick (✓)
arable	
mixed	
pastoral	
subsistence	

[2]

(c) Using evidence from Fig. 6.2, explain the advantages of the area for food production.

.....

.....

.....

.....

.....

.....

.....

.....

..... [4]

[Total: 8]

This image shows a full page of a handwriting practice worksheet. It consists of multiple rows of horizontal dashed lines spaced evenly down the page, providing a guide for letter height and placement. The background is plain white, and there are no other markings or text present.

Permission to reproduce items where third-party owned material protected by copyright is included has been sought and cleared where possible. Every reasonable effort has been made by the publisher (UCLES) to trace copyright holders, but if any items requiring clearance have unwittingly been included, the publisher will be pleased to make amends at the earliest possible opportunity.

Cambridge Assessment International Education is part of Cambridge Assessment. Cambridge Assessment is the brand name of the University of Cambridge Local Examinations Syndicate (UCLES), which is a department of the University of Cambridge.